



BENI-SUEF UNIVERSITY

Facts & Figures

2016

“Today’s Dream .. Tomorrow’s Reality”



Beni-Suef University

11 Years of Excellence





Professor
Amin Lotfy
President

Beni-Suef University is a highly dynamic and energetic university, during the last five years Beni-Suef University has increased the number of its faculties to more than the double. It also increased its capacity to host many students not only from the Governorate of Beni-Suef, but also from the neighboring Governorates of Egypt. International students, especially from Arab countries, are enrolled in several educational programs such as Law, commerce and pharmacy. The University is also undertaking research projects in the basic, applied sciences, as well as humanities, social sciences, applied health, engineering and computer sciences. This comprehensiveness means that the University can build strong links between theory and practice, and between the University and the broader community of which it is a part. Beni-Suef University is also seeking further internationalization and active partnership with foreign universities and institutions in the form of programs, centres of excellence, joint degrees, agreements and exchanging expertise.





Professor
Tarif Shawky
Vice President

Research & Post-graduate Studies

Beni-Suef University has passed through different stages since its inception. The first Stage was the foundation of the university as a branch of Cairo University. Since its independence from Cairo University in 2005, its Faculties and Programs have been increased. The sector of Post-graduate Studies and Research aims at moving forward to the Research Stage by increasing the research potentials of the university. Therefore, a very promising project was launched in 2015, taking the title of BSU Research City. The project aims at establishing a new facility devoted for scientific research on an area of 80,000 m² assigned for this particular purpose.



Professor
Alaa Abdel Halim
Vice President

Community & Environmental Affairs

Beni-Suef University is highly interested in cooperating with the local environment and the surrounding community. The sector of Community & Environmental Affairs bears the responsibility to handle this important concern. BSU has different channels of cooperation with community, the hospital is one of the main channels, that takes a main part in the health care system in the governorate of Beni-Suef. The Sector of Community & Environmental Affairs also supports many training programs to help BSU graduates to find suitable jobs.



Professor
Mohamed Khedr
Vice President

Education and Students' Affairs

The sector of education and students' affairs is considered a very important sector in BSU as it is in charge of the undergraduate students and the development of new systems for students' enrolment, registration, exams and graduation. The sector is also in charge of providing accommodation in the different university dormitories for students especially for girls. The sector supports the students' sports activities and their participation in different local and international events.

Campuses

The Main Campus

68,000 m²

West of the Nile



Campus (1)

21,000 m²

East of the Nile

Campus (2)

1,260,000 m²

East of the Nile



22

Faculties in all Disciplines

Engineering and Technology

FACULTY OF ENGINEERING

FACULTY OF COMPUTERS AND INFORMATION SYSTEMS

FACULTY OF INDUSTRIAL EDUCATION

FACULTY OF APPLIED ARTS

Medical Sciences

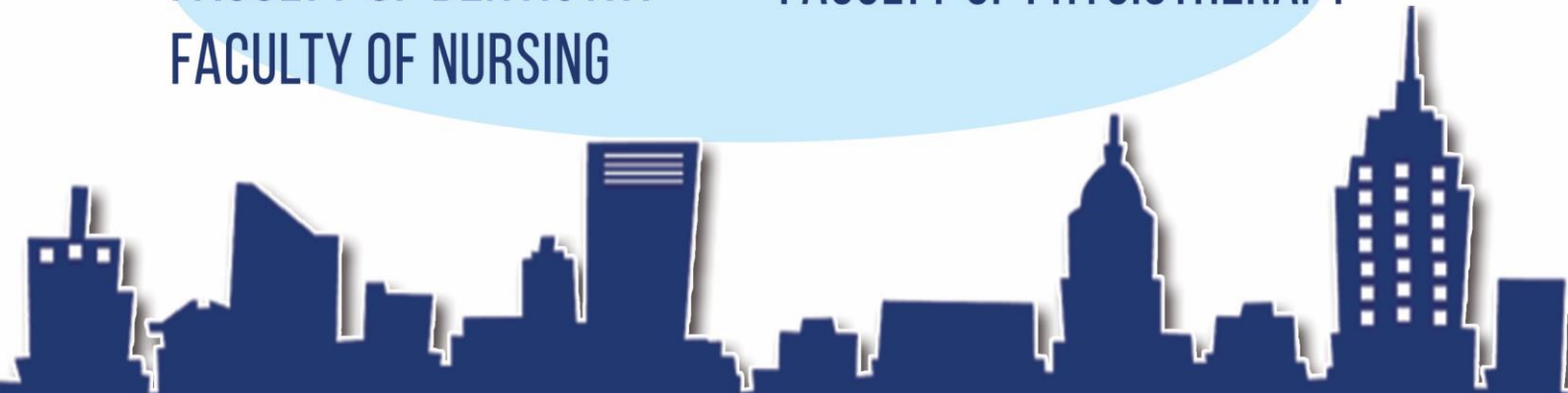
FACULTY OF MEDICINE

FACULTY OF DENTISTRY

FACULTY OF NURSING

FACULTY OF HEALTH SCIENCES

FACULTY OF PHYSIOTHERAPY



Humanities & Social Sciences

FACULTY OF ECONOMICS AND POLITICAL SCIENCES

FACULTY OF ARTS

FACULTY OF EDUCATION

FACULTY OF LAW

FACULTY OF MEDIA

FACULTY OF PHYSICAL EDUCATION

FACULTY OF KINDERGARTEN

FACULTY OF COMMERCE

Basic Sciences

FACULTY OF POSTGRADUATE STUDIES

FACULTY OF PHARMACY

FACULTY OF VETERINARY MEDICINE

FACULTY OF SCIENCE

FACULTY OF AGRICULTURE



Academic Staff

1291 Males

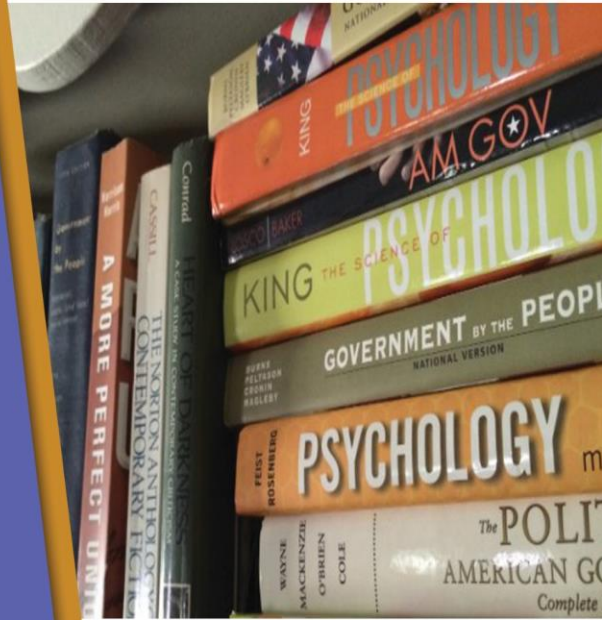
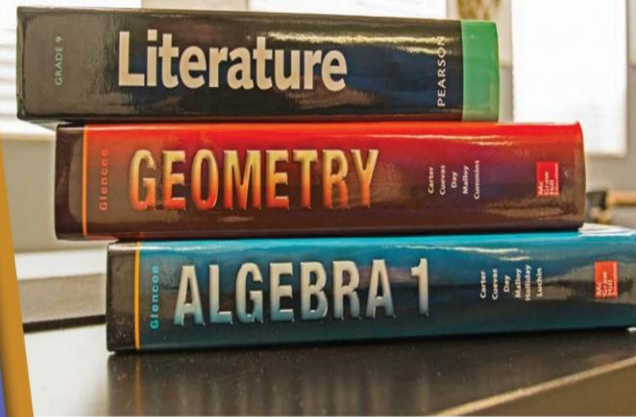
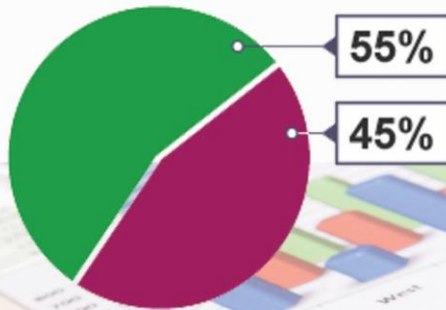
860 Females



Employees

1792 Males

1483 Females





■ Undergraduate Students

<input checked="" type="checkbox"/>	<i>Total Number</i>	53,447
<input checked="" type="checkbox"/>	<i>Female Students</i>	21,000

■ Post-graduate Students

<input checked="" type="checkbox"/>	<i>Diploma Students</i>	5050
<input checked="" type="checkbox"/>	<i>Master Students</i>	1264
<input checked="" type="checkbox"/>	<i>PhD Students</i>	469

■ International Post-graduate Students **162**



Academic **Ranking**



local Ranking **9th**



African Ranking **44th**

Nature Index 2016

Arab Universities' Ranking

28Th

U.S. News Arab Ranking
2015

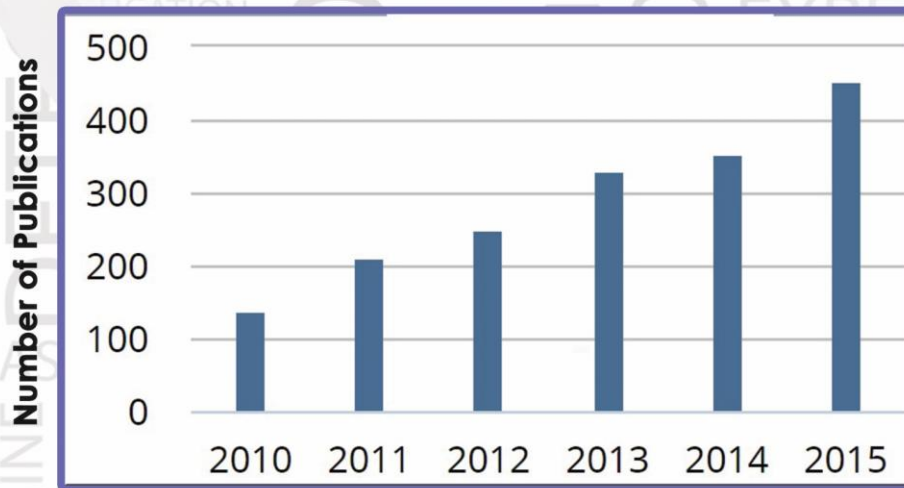
Overall Research Performance (2010 - 2015)

Publications 1863

Citations 7312

Authors 904

Citations per publication 3.9



SciVal-Based Statistics



No. of Co-authored Publications with International Institutions **1496**



Total collaborating institutions

596



Number of International Undergraduate Students



791
Kuwait



2

Iraq



10

Palestine



2

Jordan



13

Djibouti



31

Syria



3

Libya



1

Bahrain



7

Sudan



2

Somalia

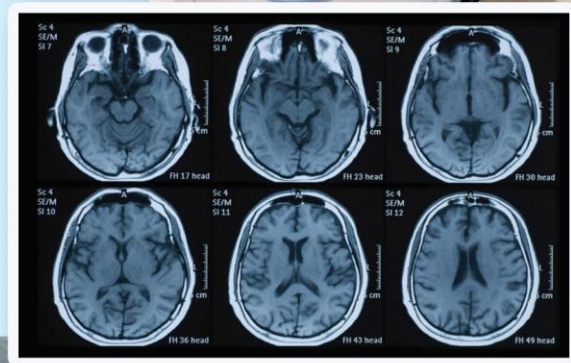


TOTAL

862

Beni-Suef University Hospital

Oncology
Gynecology
Neurology
Rheumatism
Chest
Cardiology
Endemic Diseases
Nephrology
Pediatric
Pediatric Intensive Care Unit
Premature Babies
Ophthalmology
Otorhinolaryngology
Intensive Care
Intensive Care Unit
for cerebral surgery
Intensive Care Unit
for Chest - cardiac surgery
Chest Intensive Care Unit
Neurology Intensive Care Unit
General Surgery
Plastic Surgery
Chest - cardiac surgery
Cerebral surgery
Orthopedics
Urology



Total Number of Beds

472

Scientific Research Development Unit "SRDU"



Beni-Suef University is Keen on keeping pace with scientific progress by encouraging scientific research and stimulating researchers at the university. Therefore, SRDU was established to achieve these aims. It consists of Ten offices responsible for different activities.

- Research funding office
- International Publishing Office
- Research-Industry Coordination Office
- International Ranking Office
- Training and conferences Office
- Research Endowment "Waqf" Office
- Scholarships Follow-up Office
- Laboratories and scientific Equipment Office
- International Cooperation and Foreign Relations Office
- Innovation Support ,Inventions' Copy rights and University Awards Office

10 SRDU Offices



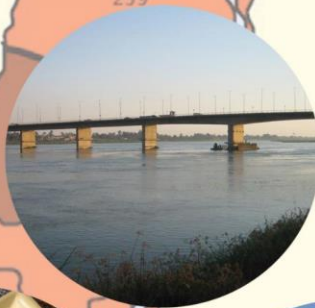
Living in Beni Suef

The city of Beni Suef is the capital of the Governorate, located about 120 km south Cairo on the west bank of the Nile River. The nearby Meidum pyramid is one of the real tourist attractions in the area in addition to the Sannour cave which is a well preserved natural cave aged almost 16 Million Years.

**Entertainment
&
Industrialized
Area**

**Outgoing
&
Vibrant
Culture**

**Friendly
People**





Prepared by

Dr.Yasser Gaber

Lecturer of Microbiology

Faculty of Pharmacy

Director of The International Ranking Office

Yasser.Gaber@pharm.bsu.edu.eg

Mr.Mostafa Morad

Graphic Designer

Scientific Research Development Unit

Mostafamorad@bsu.edu.eg

Dr.Shaymaa Abdel Aatty

Lecturer of English literature

Faculty of Arts

Editor of Beni-Suef University English

Website

Dr.Ahmad A. Elsheemi

Professor of English Literature

Chairman of the Department of English

Faculty of Arts





**B.S.U
2016**

All Rights Reserved



Headquarter : Salah Salem st. Beni-suef

Tel : +2082-2130076 Fax : +2082-2130051

E-Mail : Info@bsu.edu.eg

Web address : www.bsu.edu.eg

Cairo : 1st America El lattinya - Garden City

2nd Floor - Flat 10

Tel : +2-27948934 - 27944857 - 27948724

Fax : +2-27948563